

GEAR PUMPS



EN

GVR POMPE, was founded by Cav. Guglielmo Vagliani in 1956. Our company operates in the Italian and International market as manufacturer of gear pumps and in-line single and twin pumps.

GVR offices are located in the business area of Pieve Emanuele (Milan). We are committed to the constant research of new materials and new treatments thanks to the contribution of a new generation of technical equipment.

The plant is developed in 1000 m² area plus 500 m² used as offices. The factory includes two CNC horizontal milling machines, one numerical control lathe, one semi-automatic lathe, one manual lathe, one grinding machine, one automatic hacksaw, a test room and a paint booth.

Our strengths are fast delivery, professional accuracy and availability towards our customers, as well as quality of our products recognised by leading companies in the sector.

Sixty years of experience: the warranty of a firm-based and professional company.





All the pumps we produce are manufactured under the European machine directive. Since January 1st, 2004 we reached ISO 9001:2008 certificate in order to guarantee a better quality to the customers who decide to direct their attention to our company.

Gear pumps are used to pump lubricant and viscous liquids without any suspended and solid substance.

Some areas of application are:

- Mechanical and Iron and Steel Industry
- Food Industry
- Building Industry
- Chemical Industry

MECHANICAL AND IRON AND STEEL INDUSTRY



Lubrication of big reducers	Oil
Oil circulation in dry cleaning machines	Oil
Lubrication of big compressors for refrigeration	Oil and Ammonium
Oil circulation in transformers	Oil for transformers
Preheating of big diesel motors	Oil
Loading / Unloading of diathermic oil in boilers	Diathermic Oil
Production of metal sheets	Oil for rolling mills
Processing of trimming tools with machining units	Oil
Mills	Lubricating Oil
Fuel loading on generator sets	Diesel oil and Naphtha
Circulation of diathermic oil	Diathermic Oil
Preheating for moulds	Oil
Pouring and pumping of fuel from/into tanks	Diesel oil and Naphtha
Bring fuel to gas jet in ring plants	Diesel oil, Naphtha, BTZ, Ecoflu, etc.
Pumping of oil	Oil
Pumping of bilge water	Water and Oil

FOOD INDUSTRY



Pumping of molasses	Molasses
Bottling machines	Oil, Juice, Glucose
Machines for oil-mills	Food Oil
Food machines	Chocolate, Honey, Jelly, Melted Grease, Margarine

BUILDING INDUSTRY



Cement kiln	Naphtha, Oil
Waterproofing agents	CLS Additives
Dosing machines for additives for piling	Additives, Polyelectrolytes, Bitumen, Pitch, Asphalts

CHEMICAL INDUSTRY



Dosing machines for additives on purging plants	Additives
Pumping acid and basic liquids	Caustic Soda, Neat Soap, Detergent, Perfumes, Slack Wax, Liquid Paraffin
Plastic materials	Polyol, Isocyanate, Polyester Resin, Sodium Silicate, Phenol-Formaldehyde Resin, Polyurethane resin
Machines for textile and automotive Industry	Paintings, Varnish, Sound-deadening products, Ink
Labels machines	Glue, Vinavil, Rubber, Adhesive, Liquid Wax
Fire fighting plants	Foam

BMF-BCF

Close coupled gear pumps.

EXECUTION

Volumetric close coupled gear pumps directly coupled to motor with special shaft. Pumps available in three different constructions:

- Cast iron with shafts and gears in steel;
- Bronze with shafts and gears in Inox AISI 316;
- Inox AISI 316.

Three-phase or single-phase motor, 1400 rpm or 900 rpm, protection IP55, Cl. F.

Pumps can be available with safety by-pass valve. Inlet and outlet nozzles are aligned with same diameter.

Self-priming pumps.

APPLICATION

Pumps for lubricant liquids without any suspended solid or abrasive substance.

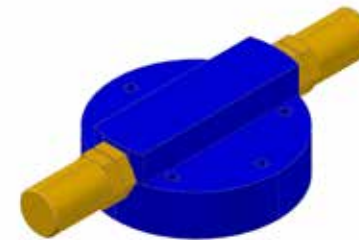
Max temperature of 100 °C for standard version.

Max viscosity of 300 cSt for 4-poles-version and 600 cSt for 6-poles-version.

Max pressure 10 Bar.

SPECIAL EXECUTION

- High temperature until 200°C.
- Special mechanical seals.
- Lip seals.
- Reversible pumps.
- Pumps on trolley.
- Single or multiple groups complete of accessories and control panel.
- Double safety by-pass valve.
- Tropicalization.
- Protection IP56.



MAIN FEATURES VALID FOR THE THREE CONSTRUCTIONS WITH OR WITHOUT BY-PASS VALVE

THREE-PHASE

5 BAR - 1400 RPM				10 BAR - 1400 RPM			
TYPE	LT/H	KW	Ø GAS	TYPE	LT/H	KW	Ø GAS
BMF2	120	0,09	3/8"	BMF2M	120	0,13	3/8"
BMF3	180	0,13	3/8"	BMF3M	180	0,18	3/8"
BMF4	240	0,18	3/8"	BMF4	240	0,18	3/8"
BMF5	300	0,26	1/2"	BMF5M	300	0,37	1/2"
BMF10	600	0,26	3/4"	BMF10M	600	0,37	3/4"
BMF15	900	0,37	3/4"	BMF15M	900	0,55	3/4"
BMF25	1500	0,55	3/4"	BMF25M	1500	0,75	3/4"
BMF35	2100	0,75	1"	BMF35M	2100	1,1	1"
BMF50	3000	1,1	1"	BMF50M	3000	1,5	1"
BMF60	3600	1,5	1" 1/4	BMF60M	3600	1,8	1" 1/4
BMF70	4200	1,8	1" 1/4				

THREE-PHASE

5 BAR - 900 RPM				10 BAR - 900 RPM			
TYPE	LT/H	KW	Ø GAS	TYPE	LT/H	KW	Ø GAS
BMF5/6	200	0,18	1/2"	BMF5/6M	200	0,26	1/2"
BMF10/6	400	0,25	3/4"	BMF10/6M	400	0,37	3/4"
BMF15/6	600	0,37	3/4"	BMF15/6M	600	0,55	3/4"
BMF25/6	1000	0,55	3/4"	BMF25/6M	1000	0,75	3/4"
BMF35/6	1400	0,75	1"	BMF35/6M	1400	1,1	1"
BMF50/6	2000	1,1	1"				
BMF60/6	2400	1,1	1" 1/4				
BMF70/6	2700	1,1	1" 1/4				

Approximated features, they can change according to the liquid pumped, motor and pressure required.

SINGLE-PHASE

5 BAR - 1400 RPM				10 BAR - 1400 RPM				5 BAR - 900 RPM			
TYPE	LT/H	KW	Ø GAS	TYPE	LT/H	KW	Ø GAS	TYPE	LT/H	KW	Ø GAS
BCF2	120	0,1	3/8"	BCF2M	120	0,11	3/8"				
BCF3	180	0,11	3/8"								
BCF4	240	0,18	3/8"								
BCF5	300	0,29	1/2"	BCF5M	300	0,37	1/2"	BCF5/6	200	0,18	1/2"
				BCF10M	600	0,37	3/4"	BCF10/6	400	0,25	3/4"
BCF15	900	0,37	3/4"	BCF15M	900	0,55	3/4"	BCF15/6	600	0,37	3/4"
BCF25	1500	0,55	3/4"	BCF25M	1500	0,75	3/4"	BCF25/6	1000	0,55	3/4"
BCF35	2100	0,75	1"	BCF35M	2100	1,1	1"	BCF35/6	1400	0,75	1"
BCF50	3000	1,5	1"								
BCF60	3600	1,5	1" 1/4								
BCF70	4200	1,5	1" 1/4								

BFC

Gear pumps with bell housing.

EXECUTION

Volumetric gear pumps with bell for coupling to B3/B14 motor with elastic joint available in three different constructions:

- Cast iron with shafts and gears in steel;
- Bronze with shafts and gears in Inox AISI 316;
- Inox AISI 316.

Pumps can be coupled to any B3/B14 standard motor.

Pumps can be available with safety by-pass valve. Inlet and outlet nozzles are aligned with same diameter.

Self-priming pumps.

APPLICATION

Pumps for lubricant liquids without any suspended solid or abrasive substance.

Max temperature of 100 °C for standard version.

Max pressure 10 Bar.



SPECIAL EXECUTION

- High temperature until 200 °C.
- Cooling radiator.
- Reversible pumps.
- Special mechanical seal.
- Lip seal.
- Bell for coupling B5 motor.
- Double safety by-pass valve.
- Tropicalization.
- Force-ventilated motor suitable for connection to inverter.
- Pumps can be coupled to: motoreducer, motovariator, dc motor 12V or 24V.
- Protection IP56.
- Atex Version.
- Single or multiple groups complete of accessories and control panel.

MAIN FEATURES

VALID FOR THE THREE CONSTRUCTIONS
WITH OR WITHOUT BY-PASS VALVE

TYPE	CM3/RUN	Ø GAS
BFC2	1,4	3/8"
BFC3	2	3/8"
BFC4	2,8	3/8"
BFC5	3,5	1/2"
BFC10	7	3/4"
BFC15	10,7	3/4"
BFC25	17,8	3/4"
BFC35	25	1"
BFC50	35,7	1"
BFC60	42,8	1" 1/4
BFC70	50	1" 1/4

Approximated features, they can change according to the liquid pumped, motor and pressure required.

B

Bare shaft gear pumps.

EXECUTION

Volumetric bare shaft gear pumps available in three different constructions:

- Cast iron with shafts and gears in steel;
- Bronze with shafts and gears in Inox AISI 316;
- Inox AISI 316.

Pumps available with three different types of seal:

- /C = Mechanical seal
- /B = Packing seal
- /A = Lip seal

Pump can be available complete of safety by-pass valve.

Inlet and outlet nozzles are aligned with same diameter.

Self-priming pumps.

APPLICATION

Pumps for lubricant and viscous liquids without any suspended solid or abrasive substance.

Max temperature of 100 °C for standard version with mechanical seal or lip seal.

Max temperature of 180 °C for standard version with packing seal.

Max pressure of 10 Bar.



SPECIAL EXECUTION

- Mechanical seal and lip seal for high temperature until 200 °C.
- Cooling chamber.
- Special mechanical seal.
- Reversible pumps.
- Pumps complete of holes for electric resistances.
- Atex version.

MAIN FEATURES

VALID FOR THE THREE CONSTRUCTIONS WITH OR WITHOUT BY-PASS VALVE

TYPE	CM3/RUN	Ø GAS
B3	2	1/2"
B5	3,5	1/2"
B10	7	1/2"
B15	10,7	3/4"
B25	17,8	3/4"
B40	28,5	1"
B50	35,7	1" 1/2
B70	50	1" 1/2
B100	71,4	2"
B150	107	2"
B200	142,8	2" 1/2
B250	178,5	2" 1/2
B300	214	2" 1/2
B350	250	2" 1/2
B400	285,7	2" 1/2
B500	357	3"
B550	392,8	3"
B600	428,5	3"
B1500	1.071	4"
B2000	1428	4"

Approximated features, they can change according to the liquid pumped, motor and pressure required.

MBM

Gear pumps mounted on base plate.

EXECUTION

Volumetric gear pumps mounted on base plate suitable for coupling to B3 electric motor by elastic joint available in three different constructions:

- Cast iron with shafts and gears in steel;
- Bronze with shafts and gears in Inox AISI 316;
- Inox AISI 316.

Pumps available with three different types of seal:

- /C = Mechanical seal
- /B = Packing seal
- /A = Lip seal

Pump can be available complete of safety by-pass valve.

Inlet and outlet nozzles are aligned with same diameter.

Self-priming pumps.

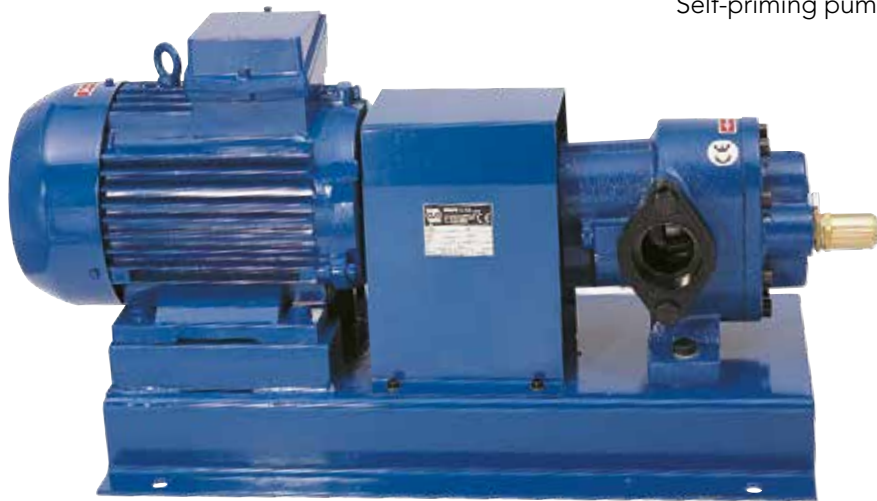
APPLICATION

Pumps for lubricant and viscous liquids without any suspended solid or abrasive substance.

Max temperature of 100 °C for standard version with mechanical seal or lip seal.

Max temperature of 180 °C for standard version with packing seal.

Max pressure of 10 Bar.



SPECIAL EXECUTION

- Mechanical seal and lip seal for high temperature until 200 °C.
- Cooling chamber.
- Special mechanical seal.
- Reversible pumps.
- Pumps on trolley.
- Pumps complete of holes for electric resistances.
- Tropicalization.
- Force-ventilated motor suitable for connection to inverter.
- Pumps can be coupled to: motoreducer, motovariator, dc motor 12V or 24V, diesel motor, internal combustion engine, pulley.
- Control panel.
- Atex version.
- Single or multiple groups complete of accessories and control panel.

Approximated features, they can change according to the liquid pumped, motor and pressure required.

MAIN FEATURES

VALID FOR THE THREE CONSTRUCTIONS WITH OR WITHOUT BY-PASS VALVE

TYPE	CM3/RUN	Ø GAS	LT/H @ 1400 RPM	LT/H @ 900 RPM	LT/H @ 700 RPM
MBM3	2	1/2"	180	115	90
MBM5	3,5	1/2"	300	192	150
MBM10	7	1/2"	600	385	300
MBM15	10,7	3/4"	900	578	450
MBM25	17,8	3/4"	1.500	964	750
MBM40	28,5	1"	2.400	1.542	1.200
MBM50	35,7	1" 1/2	3.000	1.928	1.500
MBM70	50	1" 1/2	4.200	2.700	2.100
MBM100	71,4	2"	6.000	3.857	3.000
MBM150	107	2"	9.000	5.785	4.500
MBM200	142,8	2" 1/2	12.000	7.714	6.000
MBM250	178,5	2" 1/2	15.000	9.642	7.500
MBM300	214	2" 1/2	18.000	11.571	9.000
MBM350	250	2" 1/2	21.000	13.500	10.500
MBM400	285,7	2" 1/2	24.000	15.428	12.000
MBM500	357	3"	30.000	19.285	15.000
MBM550	392,8	3"	33.000	21.214	16.500
MBM600	428,5	3"	36.000	23.142	18.000
MBM1500	1.071	4"			45.000
MBM2000	1428	4"			60.000

BC

Bare shaft gear pumps with heating chamber.

EXECUTION

Bare shaft gear pumps complete of heating chamber on the pump's body available in two different constructions:

- Cast iron with shafts and gears in steel;
- Inox AISI 316.

Pumps available with three different types of seal:

- /C = Mechanical seal
- /B = Packing seal
- /A = Lip seal

Pumps can be available complete of safety by-pass valve.

Pumps can be heated by recirculating inside the chamber hot water, steam or the liquid pumped.

Inlet and outlet nozzles are aligned with same diameter.

Self-priming pumps.

APPLICATION

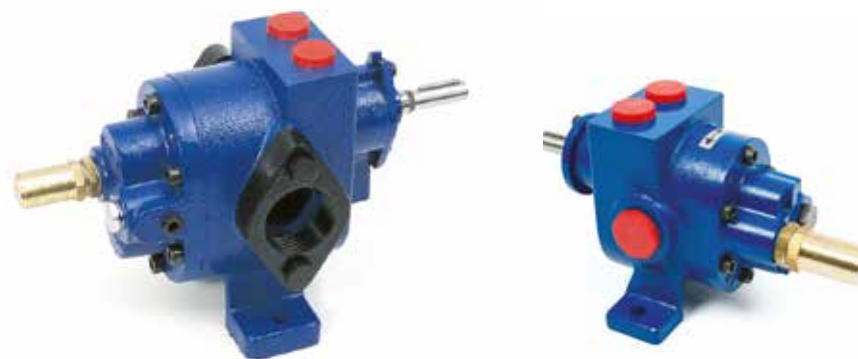
Pumps for lubricant and viscous liquids without any suspended solid or abrasive substance.

Pumps for very thick liquids as glue, bitumen, resin or any liquid that must be heated in order to not solidify.

Max temperature of 100 °C for standard version with mechanical seal or lip seal.

Max temperature of 180 °C for standard version with packing seal.

Max pressure of 10 Bar.



SPECIAL EXECUTION

- Mechanical seal and lip seal for high temperature until 200 °C.
- Special mechanical seal
- Reversible pumps.
- Atex version.

MAIN FEATURES

VALID FOR THE TWO CONSTRUCTIONS
WITH OR WITHOUT BY-PASS VALVE

TYPE	CM3/RUN	Ø GAS
BC10	7	3/4"
BC15	10,7	3/4"
BC25	17,8	3/4"
BC50	35,7	1" 1/2
BC70	50	1" 1/2
BC100	71,4	2"
BC150	107	2"
BC200	142,8	2" 1/2
BC250	178,5	2" 1/2
BC300	214	2" 1/2
BC350	250	2" 1/2
BC400	285,7	2" 1/2

Approximated features, they can change according to the liquid pumped, motor and pressure required.

MBMC

Gear pumps with heating chamber mounted on base plate.

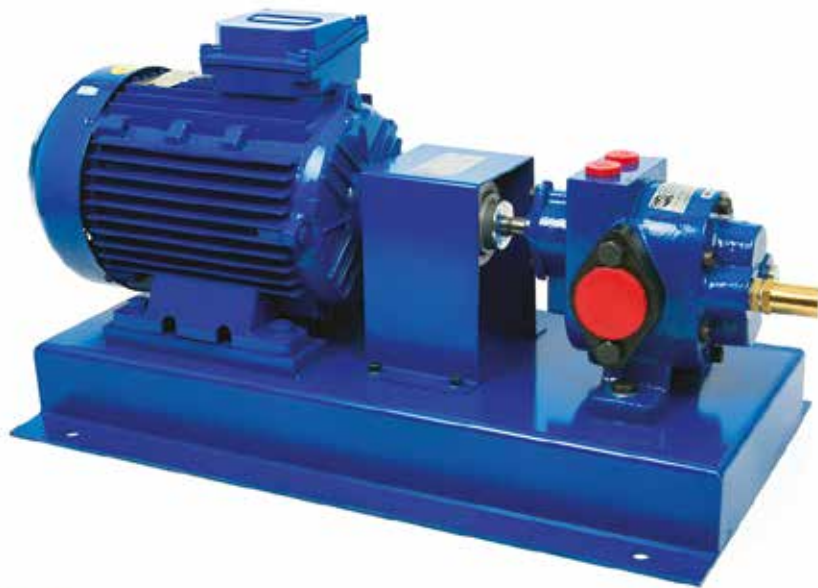
EXECUTION

Volumetric gear pumps complete of heating chamber on the pump's body and mounted on base plate suitable for coupling to electric motor form B3 by elastic joint available in two different constructions:

- Cast iron with shafts and gears in steel;
- Inox AISI 316.

Pumps available with three different types of seal:

- /C = Mechanical seal
- /B = Packing seal
- /A = Lip seal



Pumps can be available complete of safety by-pass valve.

Pumps can be heated by recirculating inside the chamber hot water, steam or the liquid pumped.

Inlet and outlet nozzles are aligned with same diameter.

Self-priming pumps.

APPLICATION

Pumps for lubricant and viscous liquids without any suspended solid or abrasive substance.

Pumps for very thick liquids as glue, bitumen, resin or any liquids that must be heated in order to not solidify.

Max temperature of 100 °C for standard version with mechanical seal or lip seal.

Max temperature of 180 °C for standard version with packing seal.

Max pressure of 10 Bar.

SPECIAL EXECUTION

- Mechanical seal and lip seal for high temperature until 200 °C.
- Special mechanical seal.
- Reversible pumps.
- Pumps on trolley.
- Tropicalization.
- Force-ventilated motor suitable for connection to inverter.
- Pumps can be coupled to: motoreducer, motovariator, dc motor 12V or 24V, diesel motor, internal combustion engine, pulley.
- Electric panel.
- Atex version.
- Single or multiple groups complete of accessories and control panel.

MAIN FEATURES

VALID FOR THE TWO CONSTRUCTIONS WITH OR WITHOUT BY-PASS VALVE

TYPE	CM3/RUN	Ø GAS	LT/H @ 1400 RPM	LT/H @ 900 RPM	LT/H @ 700 RPM
MBMC10	7	3/4"	600	385	300
MBMC15	10,7	3/4"	900	578	450
MBMC25	17,8	3/4"	1.500	964	750
MBMC50	35,7	1" 1/2	3.000	1.928	1.500
MBMC70	50	1" 1/2	4.200	2.700	2.100
MBMC100	71,4	2"	6.000	3.857	3.000
MBMC150	107	2"	9.000	5.785	4.500
MBMC200	142,8	2" 1/2	12.000	7.714	6.000
MBMC250	178,5	2" 1/2	15.000	9.642	7.500
MBMC300	214	2" 1/2	18.000	11.571	9.000
MBMC350	250	2" 1/2	21.000	13.500	10.500
MBMC400	285,7	2" 1/2	24.000	15.428	12.000

Approximated features, they can change according to the liquid pumped, motor and pressure required.

APF

Flanged gear pumps.

EXECUTION

Volumetric flanged gear pumps complete of joint suitable for coupling to electric motor form B3/B14.

■ Construction in cast iron.

Pumps can be coupled to any standard motor form B3/B14.

Pumps can be available complete of safety by-pass valve.

Inlet and outlet nozzles are aligned with same diameter.

Self-priming pumps.

APPLICATION

Pumps for lubricant liquids without any suspended solid or abrasive substance.

Max temperature of 100 °C for standard version.

Max pressure 20 Bar.



SPECIAL EXECUTION

- High temperature till 200 °C.
- Special mechanical seals.
- Reversible pumps.
- Single or multiple groups complete of accessories and control panel.
- Tropicalization.
- Protection IP56.
- Force-ventilated motor suitable for connection to inverter.
- Pumps can be coupled to: motoreducer, motovariator, dc motor 12V or 24V.
- Atex version

MAIN FEATURES

VALID FOR PUMPS WITH OR WITHOUT BY-PASS VALVE

TYPE	CM3/RUN	Ø GAS
APF5	3,5	1/2"
APF10	7	3/4"
APF15	10,7	3/4"
APF20	14	3/4"
APF25	17,8	3/4"
APF30	21,4	1"
APF40	28,5	1"
APF50	35,7	1" 1/4
APF60	42,8	1" 1/4
APF70	50	1" 1/4
APF80	57	1" 1/4

Approximated features, they can change according to the liquid pumped, motor and pressure required.

IF

Gear pumps for low viscosity.

EXECUTION

Volumetric flanged gear pumps complete of joint suitable for coupling to electric motor B3/B14 or mounted on base plate and coupled to electric motor B3, available in two different constructions:

- Bronze with shafts and gears in Inox AISI 316;
- Inox AISI 316.

Pumps can be coupled to any standard motor form B3 or B3/B14.

The four bushings of the pump can be supplied in different materials according to the liquid to pump. These bushings reinforce the workload of the shaft and avoid the premature usage of the gears.

Pumps can be available complete of safety by-pass valve.

Inlet and outlet nozzles are aligned with same diameter.

Self-priming pumps.

APPLICATION

Pumps for lubricant liquids with viscosity similar to water without any suspended solid or abrasive substance.

Pumps suitable for pumping: cosmetic products, foodstuffs, solvents and derivatives, water solutions, acid and basic solutions.

Max temperature of 100 °C for standard version.

Max pressure 20 Bar.



SPECIAL EXECUTION

- High temperature until 200 °C.
- Special mechanical seals.
- Reversible pumps.
- Special bushings.
- Tropicalization.
- Protection IP56.
- Force-ventilated motor suitable for connection to inverter.
- Pumps can be coupled to: motoreducer, motovariator, dc motor 12V or 24V.
- Atex version.

MAIN FEATURES

VALID FOR THE TWO CONSTRUCTIONS WITH OR WITHOUT BY-PASS VALVE

TYPE	CM3/RUN	Ø GAS
IF5	3,5	1/2"
IF10	7	1/2"
IF15	10,7	3/4"
IF25	17,8	3/4"

Approximated features, they can change according to the liquid pumped, motor and pressure required.

INDEX

PRODUCTS

BMF-BCF	6
BFC	8
B	10
MBM	12
BC	14
MBMC	16
APF	18
IF	20





GVR POMPE S.r.l.

Via dell'Artigianato, 19 ■ Fraz. Fizzonasco
20090 Pieve Emanuele (MI) Italy
Tel. +39 02 9072 5577 ■ Fax +39 02 9072 2034
info@gvrpompe.com ■ www.gvrpompe.com